



The **RF-TUGV** is the Rover with Docking Station for industrial applications. Designed to be used in harsh environment. It is compliant with EU standards, and it is ready to use.

## RF-TUGV

### UAV Technical Specs:

MTOW	< 180 kg
Payload max weight	120 kg
Drive mode	Remote/Autonomous
Max Barrier Height	200 mm
Ramp Obstacle	30° (can climb stairs)
Endurance	> 3 h
Temp. range	-20/+45 °C
IP rating	65

### Remarkable features:

- LTE/5G connectivity
- Host different Payload & Multi-functionalities
- RTK GPS for high precision localization
- Fail-Safe procedure
- LIDAR 360°
- CE Mark



### Safety Features

- Advance Obstacle Avoidance SW
- Emergency Light and Sound
- Remote Emergency Stop
- Navigation Camera

### RaFla s.r.l.

Via Falerense Est, 29, Piane di Montegiorgio (FM)  
Italy



## Advanced solution for:

- Maintenance Inspection
- Surveillance
- Photogrammetry
- EO/IR Inspections
- LiDAR Survey



## Docking Station

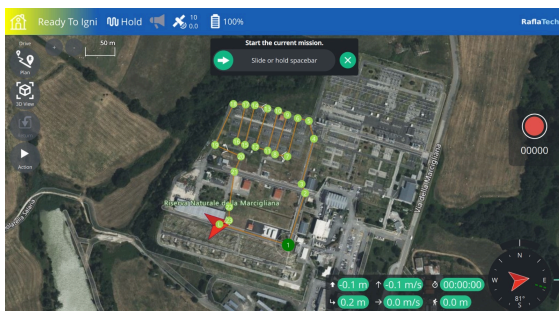
- Different Charging Mode
- Autonomous Operation or Remote Control
- Data connection
- Internal UPS
- Local Weather Station



## RF-TUGV

## Op Control Center GUI

- Pilot login
- Mission Planning
- Hangar monitoring system
- Alarm & Warning
- Automatic Report
- Local Weather Condition



## Multiple Payloads Available

- Unique quick release mounting for all payloads
- Universal power and signal connector



Dual sensor EO/IR for thermal analysis and AI tracking



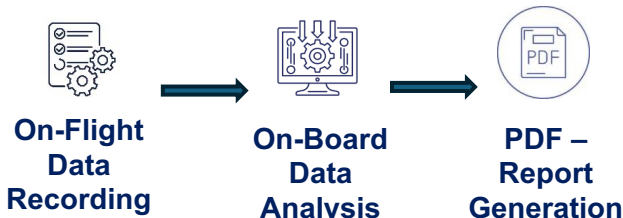
Electro Optical camera with AI tracking system



Robotic Arm



LiDAR for 3D scan



## Other Payload Available