



## Advanced UAV solution for:

- ILS maintenance
- Surveillance
- Photogrammetry
- EO/IR Inspections
- LiDAR Survey



The **ReFly 6** is a hexacopter for industrial applications. Designed to be used in harsh environment. It is compliant with EU standards, and it is ready for Class marking.

## ReFly 6

### UAV Technical Specs:

MTOW	< 25 kg
Payload max weight	6 kg
Datalink range	> 5 km
Flight speed max	20 m/s
Wind resistance	Up to 12,5 m/s
Endurance	> 25 min
Temp. range	-20/+45 °C
IP rating	45

### Remarkable features:

- LTE/5G connectivity
- Foldable arms for easy transportation
- Foldable 22-inch carbon fiber props
- Compatible with wooden props
- Premium quality motors



### Safety Features

- FTS compliant with MOC Light-UAS.2511-01
- ASTM F3322-18 compliant Parachute
- ADS-B for air traffic tracking
- Navigation camera

### RaFla s.r.l.

Via Faleriense Est, 29, Piane di Montegiorgio (FM)  
Italy



## Advanced UAV solution for:

- ILS maintenance
- Surveillance
- Photogrammetry
- EO/IR Inspections
- LiDAR Survey



## ReFly 6

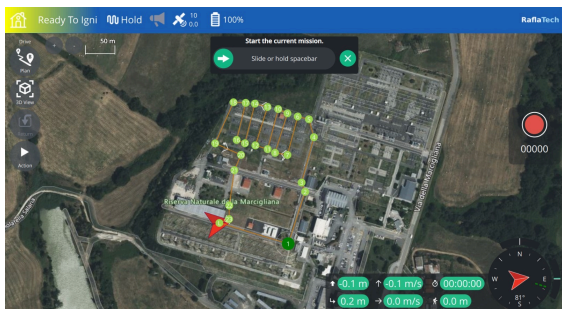
## Double Screen Ground Control Station

- Two high visibility displays
- High quality control sticks and switches
- Dual battery with hot swap
- USB port
- LTE connectivity



## Flight Control GUI

- Pre-Flight checks
- Pilot login
- Mission Planning
- Mission Monitoring
- 3D mission planning



## Multiple Payloads Available

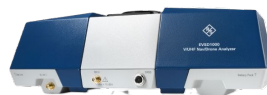
- Unique quick release mounting for all payload
- Universal power and signal connector



Dual sensor EO/IR for thermal analysis and AI tracking



Electro Optical camera with AI tracking system



EVSD1000 or EVSF1000 for ILS inspection



LiDAR for 3D scan